



DEMO BOOK



Print or view
on screen the
following pages



Open the app
on your device:
choose one of the
pages and scan it



Choose and
view the
multimedia
resources

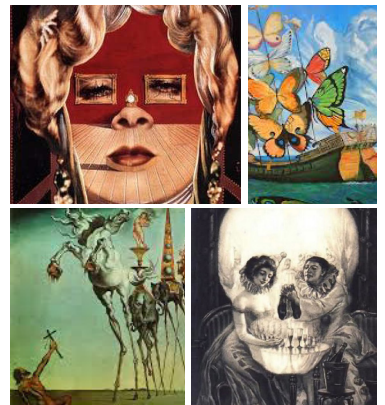


Salvador Dalí

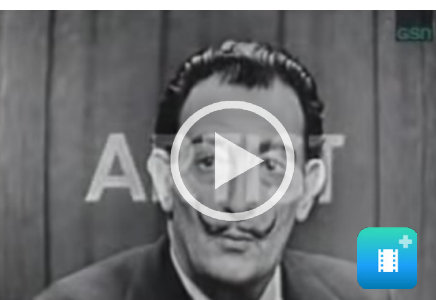


Salvador Domingo Felipe Jacinto Dalí i Domènech, Marqués de Dalí de Púbol, known as Salvador Dalí, was a prominent Spanish surrealist painter born in Figueres, Catalonia, Spain.

Dalí was a skilled draftsman, best known for the striking and bizarre images in his surrealist work. His painterly skills are often attributed to the influence of Renaissance masters. His best-known work, *The Persistence of Memory*, was completed in August 1931. Dalí's artistic repertoire included film, sculpture, and photography, in collaboration with a range of artists in a variety of media.



Some of the most famous Dalí's paintings



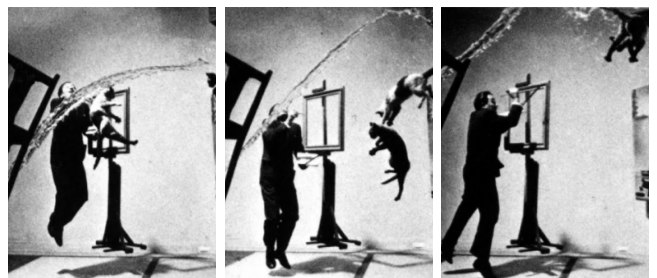
"It is not necessary for the public to know whether I am joking or whether I am serious, just as it is not necessary for me to know it myself."

MAY 11, 1904 - JAN 23, 1989

Photography

Photographers with whom he collaborated include Man Ray, Brassai, Cecil Beaton, and Philippe Halsman.

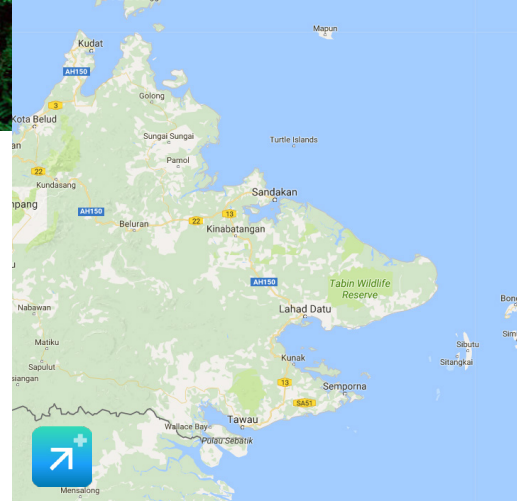
To compose a shot like this, three of pictorial elements has to be 'flying': Dalí, water, and ...cats.





Borneo rainforest

a 220,000-km² region in the mountainous centre of the island



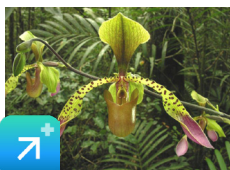
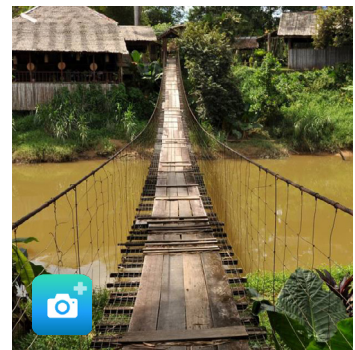
Borneo lowland rain forest is an ecoregion, within the tropical and subtropical moist broadleaf forests biome, of the large island of Borneo in Southeast Asia. It supports approximately 10,000 plant species, 380 bird species and several mammal species. The Borneo lowland rain forest is diminishing due to logging, hunting and conversion to commercial land utilisation.

AREA 165,100 square miles

TEMPERATURE more than 18 °C.

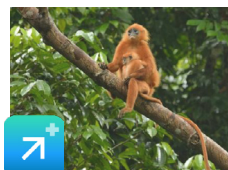
Threats and preservation

Logging and conversion of natural forests to rubber, oil palm and industrial timber plantations and for small-échelle farming have given rise to significant deforestation in recent decades. In 1982–83 and again in 1997–98, forest feux in Kalimantan cleared autour 25,000 km² each fois for oil palm planting. Further threats in Sabah come from exploration for oil and coal in the Maliau Basin and the draining of the wetlands on the Klias Peninsula.



FLORA

The lowlands of Borneo are home to the richest rainforest in the world.



FAUNA

The wildlife of this ecoregion consists of a large number of forest animals.



Airport security

All the techniques used in protecting passengers.



DIALOGUE AT THE AIRPORT

Process and equipment

Large numbers of people pass through airports every day. This presents potential targets for terrorism and other forms of crime because of the number of people located in one place.

Similarly, the high concentration of people on large airliners, the potential high death rate with attacks on aircraft, and the ability to use a hijacked airplane as a lethal weapon may provide an alluring target for terrorism.



Jake: This is my mum, Clare, and this is my dad, Mike.

Mum: Hello, Zac. Welcome to the UK. Nice to meet you.

Zac: Thanks, Mrs Robertson. Nice to meet you too.

Dad: Is this Zac's bag, Jake?

Jake: I'm not sure. Have you got two bags, Zac?

Zac: No, I haven't. I've just got my backpack.

Jake: Whose is this suitcase then?

Dad: Has it got a name on it?

Jake: Yes, it has. 'Sophie Richards.'

Zac: Oh yes, it's my friend Sophie's suitcase! Her suitcase is red.

Airport security attempts to prevent any threats or potentially dangerous situations from arising or entering the country. If airport security does succeed then the chances of any dangerous situation, illegal items or threats entering into an aircraft, country or airport are greatly reduced. As such, airport security serves several purposes: To protect the airport and country from any threatening events, to reassure the traveling public that they are safe and to protect the country and their people.



Tips for first-time travellers



Travel on the cheap